

Emerging Construction Technologies

Quarterly Report: January – March 2008

(www.ect-purdue.org)

CONTENTS

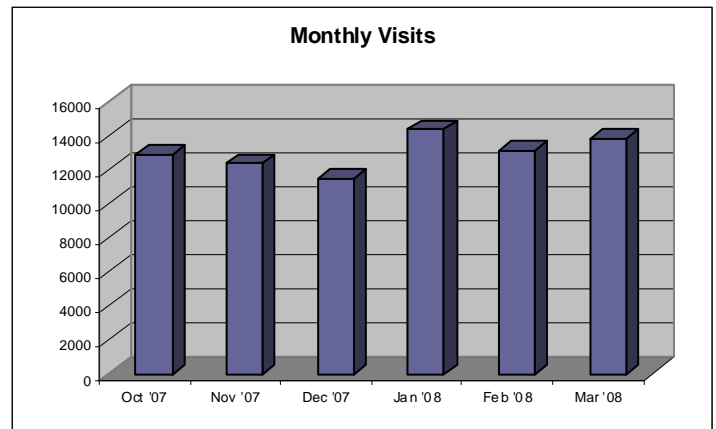
1. Introduction
2. ECT Visitors
3. ECT Members
4. Updates
5. Fact Sheet Index
6. Fact Sheet Visitors Statistics

Avg. Page views per visit: 2.20
 Avg. Page views per hour: 19.0
 Avg. Page views per day: 452.5
 Avg. Visits per day: 160.25

A comparison with the previous quarter shows that the number of visitors is steadily increasing.

I. INTRODUCTION

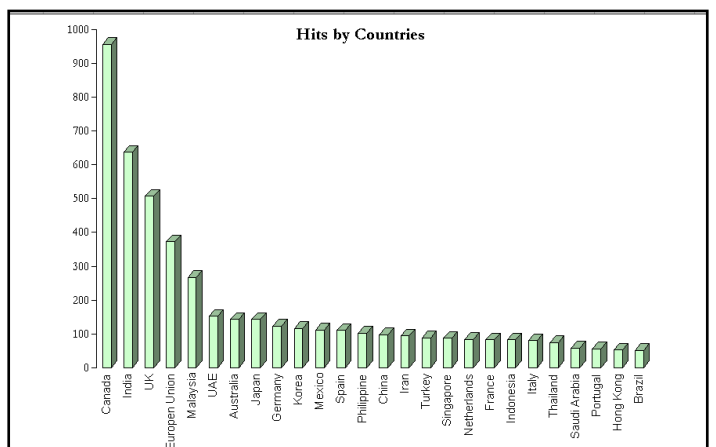
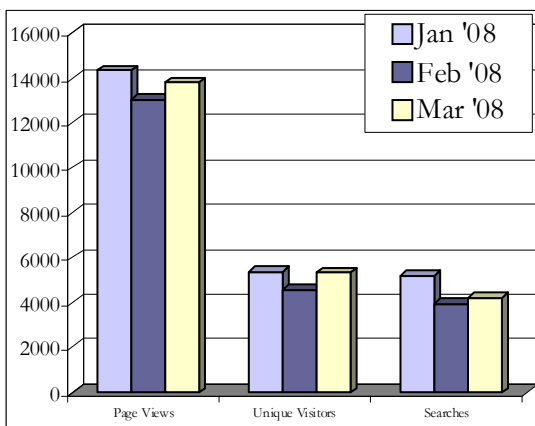
This is the second quarterly report of the Purdue - Emerging Construction Technologies website since it's re-launch. ECT held a successful fund raising drive this quarter with the first phase for factsheet holders and we are getting ready to launch the second phase of the fund raising drive to reach our large body of subscribers. We wish to thank all the members for their continuing support to Purdue -ECT. It is your support that enables us to continue this non-profit service to the construction industry. We have also added several new features to the ECT website. Following is the quarterly report for the period January 1, '08 to March 31, '08.



II. ECT VISITORS

Purdue ECT website had 41,176 visits in the period from Jan 1, '08 to Mar 31, '08. An analysis of this data is provided below:

Our visitors are from industry as well as from academia. A country-by-country analysis of our viewers shows that although 8,369 visits out of 41,176 are from the U.S., we also have an international network, as suggested by the following graph. The international coverage of ECT remained consistent in this quarter as well.





Emerging Construction Technologies

III. ECT MEMBERS

The website had 30 new subscriptions during the reporting period. Currently our website has a total of 1640 members, the breakup of which is given below:

Fact Sheet Holders:	340
Subscribers:	922
Purdue Alumni:	378

IV. UPDATES

- Purdue-ECT had 6 new emerging technologies under review in the reporting period. These technologies are currently under review by relevant experts and would be added to the website in coming weeks.
- Purdue ECT started with the 'Factsheets of the Week' series. Through this feature, 5 emerging technologies are showcased each week. This feature was initiated to provide uniform exposure to all the technologies and at the same time update our subscribers of what is on the ECT website.
- A new section called 'Research Breakthroughs' was started and all the research based factsheets from academic institutions and research laboratories are compiled under this section.
- Purdue-ECT team is also working on improving the layouts and design of the website.

Please stay tuned for the new factsheets that get added to the ECT website. Please contact us incase you have any suggestions or comments.

Purdue ECT Team

C/o Prof. Makarand Hastak,
Head, Division of Construction Engineering &
Management, Purdue University.
Email: ectinfo@ecn.purdue.edu

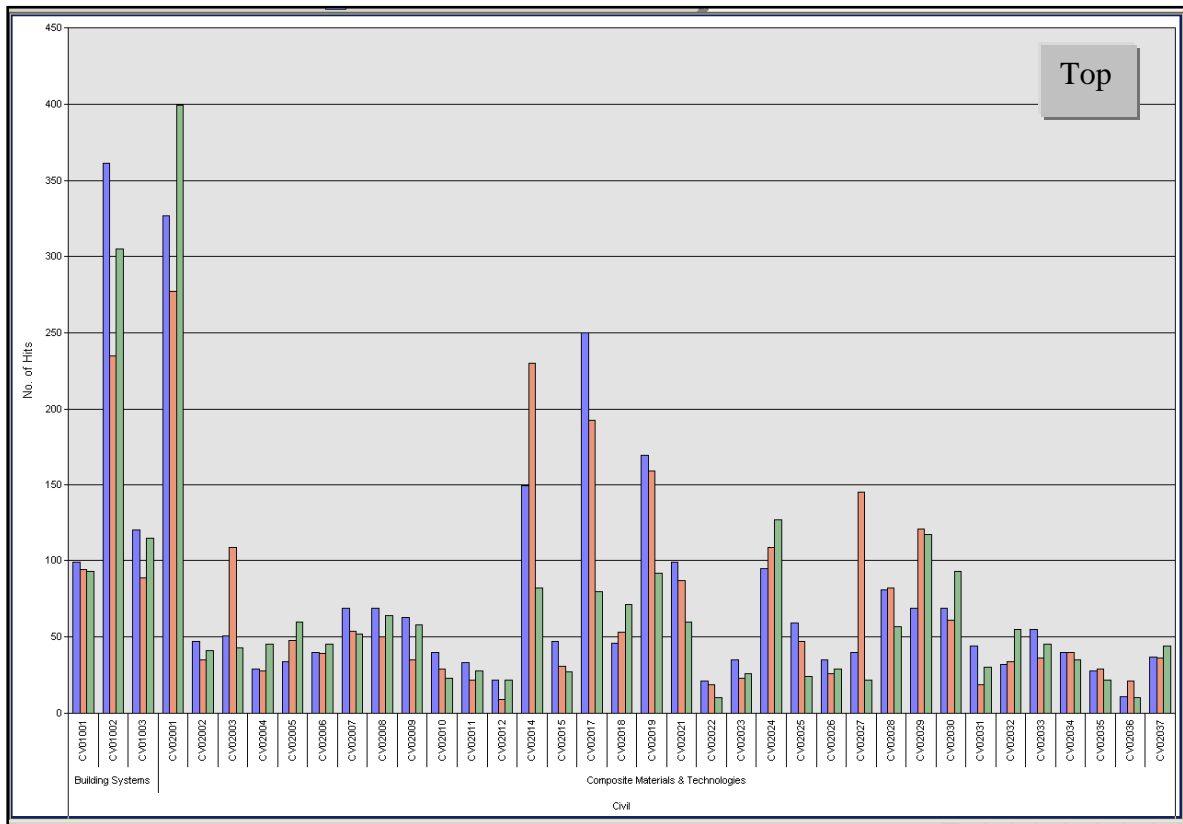
Copyright © 2008, Purdue ECT

V. FACT SHEET INDEX

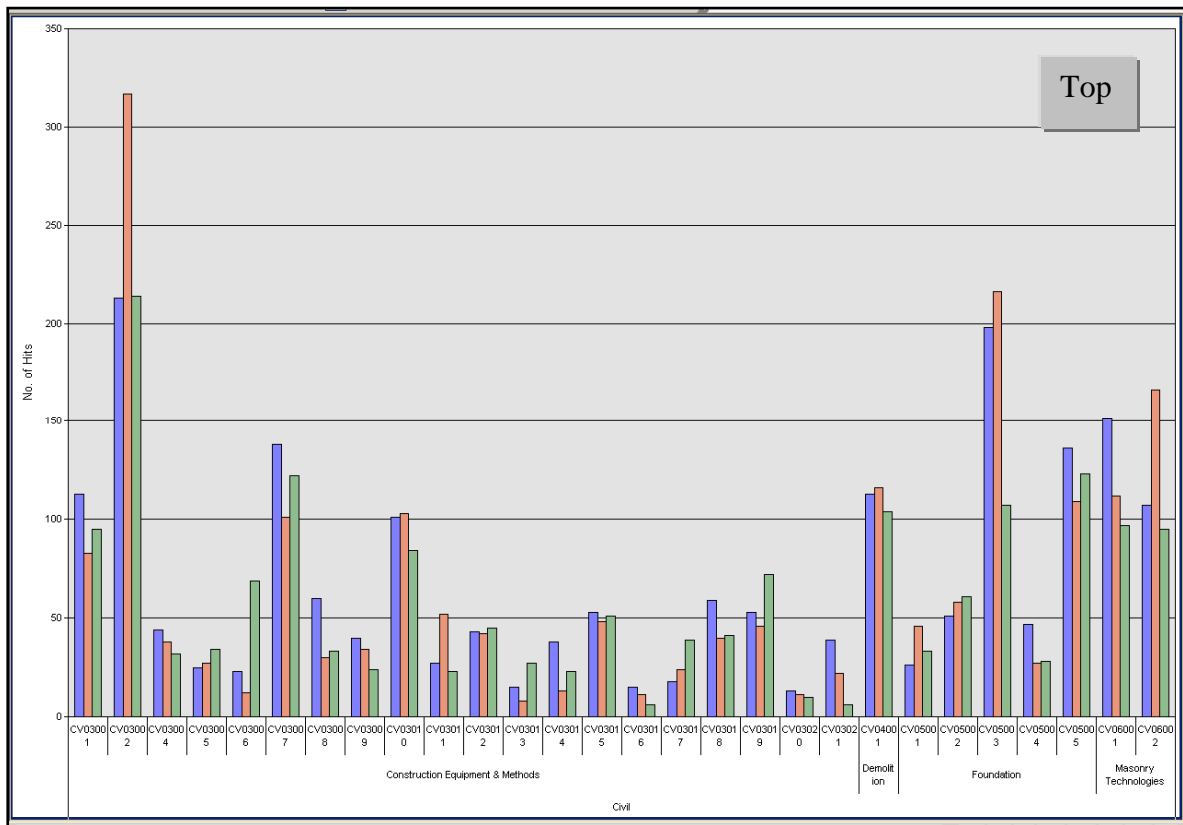
	Sub-Area	No of Fact Sheets	Fact Sheet ID Prefix
Civil	Building Systems	4	CV01
	Composite Materials & Technologies	37	CV02
	Construction Equipment and Methods	21	CV03
	Demolition	1	CV04
	Foundation	5	CV05
	Masonry Technologies	2	CV06
	Roofing Technologies	2	CV07
	Steel Technologies	5	CV08
	Structural Connection Technologies	6	CV09
	Trenchless Technologies	7	CV10
Mechanical	Conveying Systems	2	MC04
	Industrial Equipment	1	MC07
	Internal Pipeline Assessment Technologies	1	MC08
	Pipe Technologies	4	MC09
	Welding Technologies	2	MC13
Internet Based	e-Marketplace	3	IN01
	Information Services	7	IN02
	Network Technology & Equipment	3	IN03
	Web-based Learning Systems	2	IN04
	Web-based Project Management	4	IN05
	Web-based Engineering Software	4	IN06
Electrical	Basic Electrical Materials & Methods	1	EL01
	Electrical Power	0	EL03
	Lighting	0	EL04
	Wiring Methods	0	EL08
Safety	Safety Software	1	SA01
	Safety Equipment & Method in Construction	3	SA02
Sensors	Non-Destructive Evaluation	6	SE01
	Construction Equipment & Methods	2	SE02
	Security	1	SE03
Other Technologies	Communication	3	OT01
	Engineering Software	12	OT02
	Equipment Automation	9	OT03
	Non-Destructive Evaluation	6	OT04
	Recycling	3	OT05
	Remediation	5	OT06
	Robotics	3	OT07
	Security	4	OT08
	Site Positioning & Metrology	2	OT09
	Soil Remediation	9	OT10
	Water/Waste Systems	1	OT11
	Water Detection/Resistance	2	OT12
TOTAL		196	

VI. FACT SHEET VISITORS STATISTICS

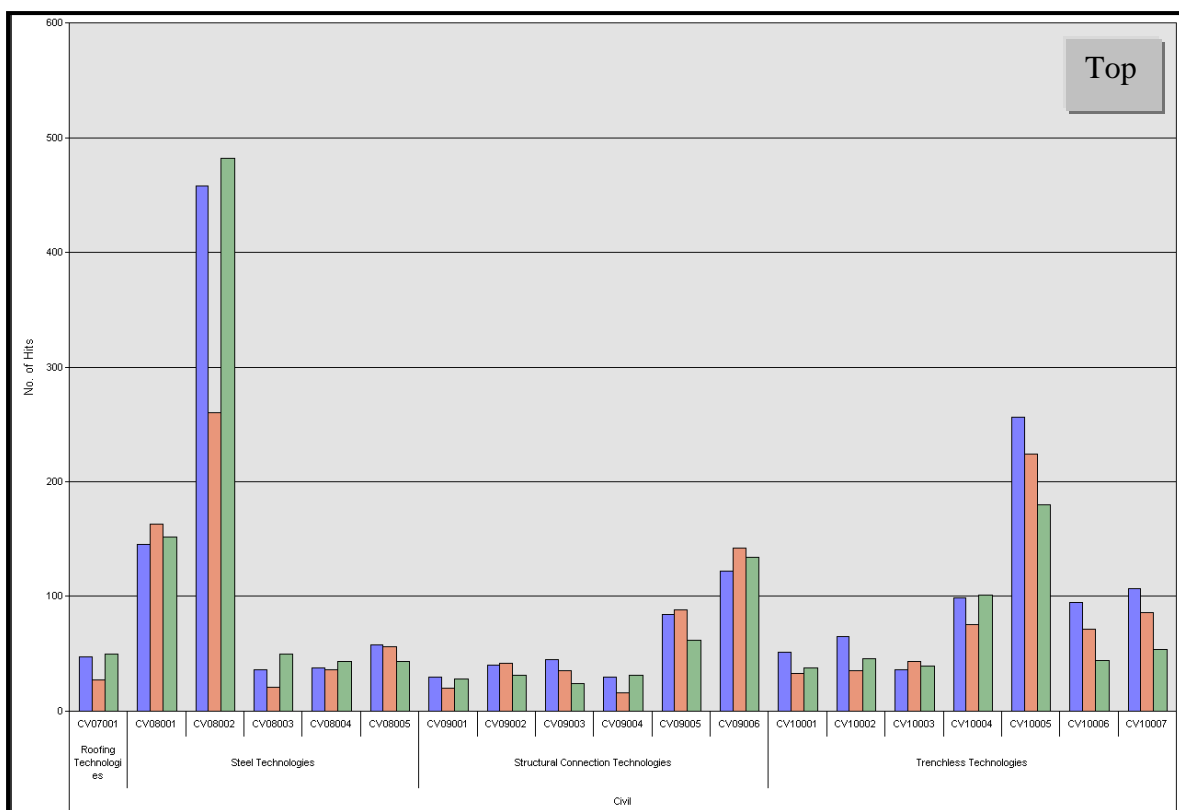
CIVIL: CV01 & CV02



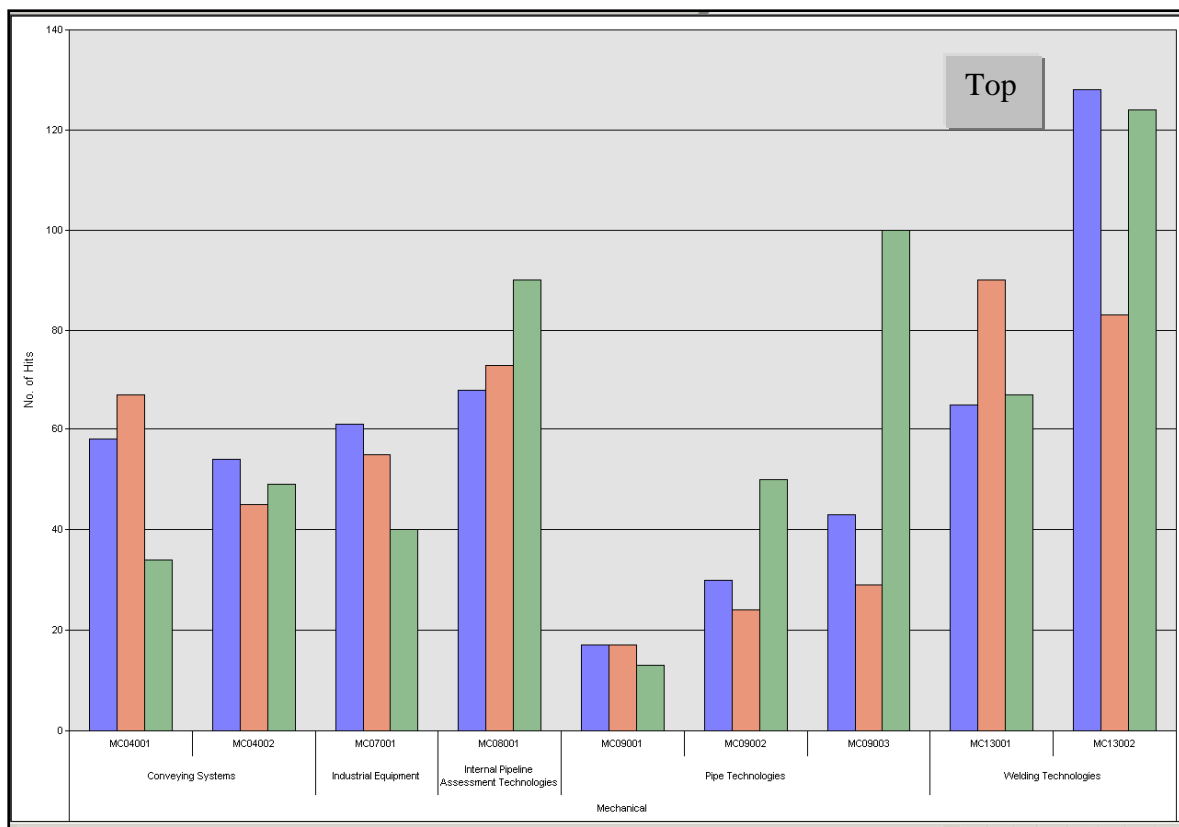
CIVIL: CV03 to CV06



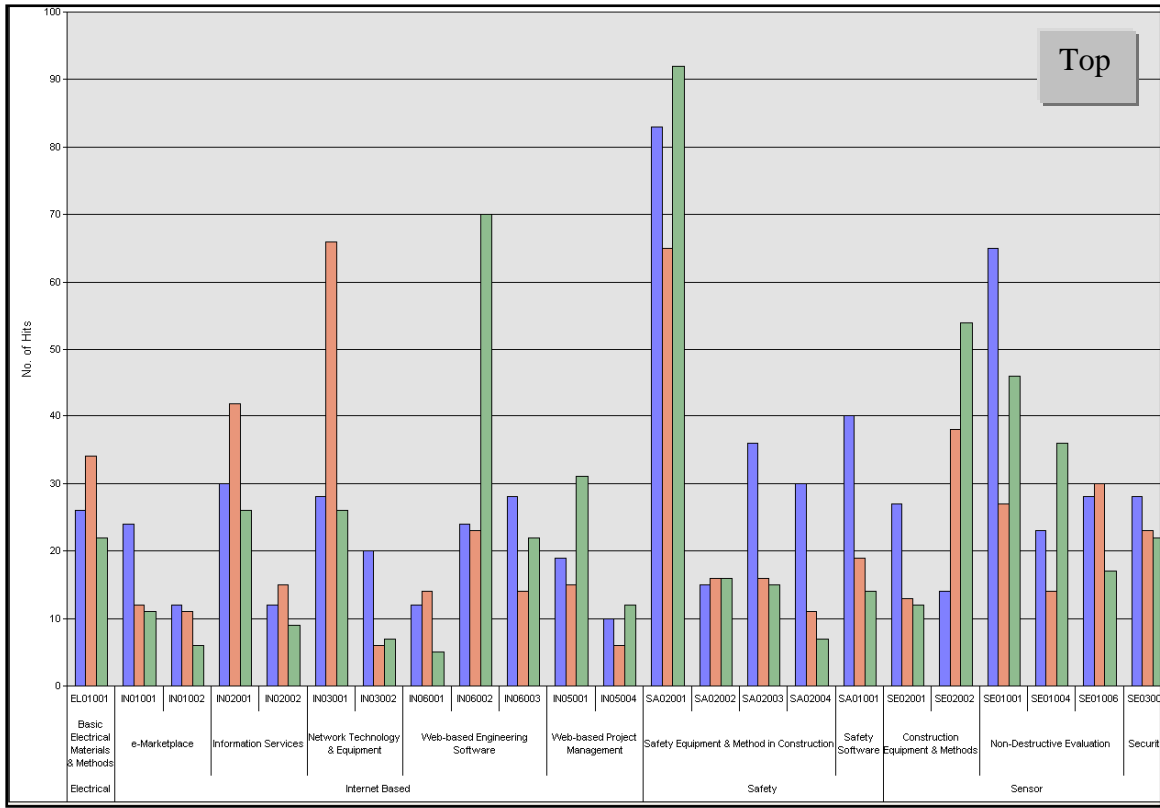
CIVIL: CV07 to CV10



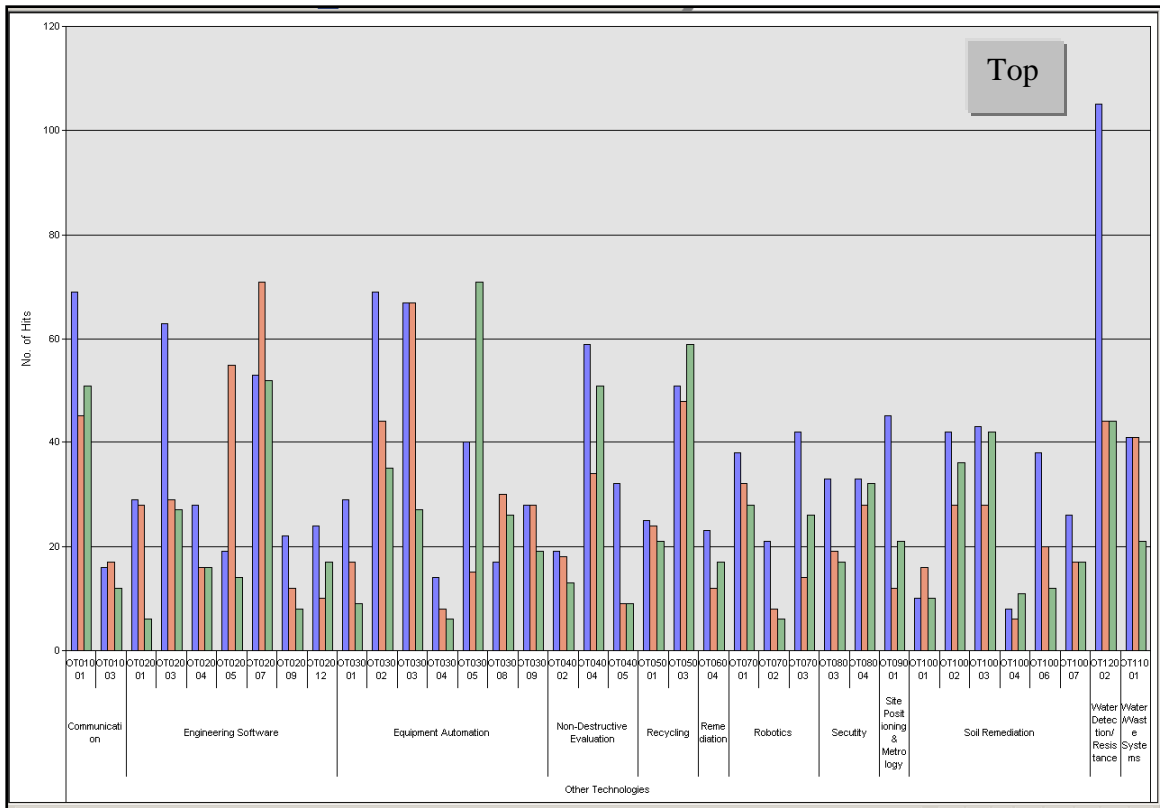
MECHANICAL: MC04 to MC13



ELECTRICAL (EL), INTERNET BASED (IN), SAFETY (SA) AND SENSOR (SE) TECHNOLOGIES



OTHER TECHNOLOGIES: OT01-OT11



Purdue – Emerging Construction Technologies Website

Contribution

Name: _____

Organization: _____

Address: _____

Phone & Fax: _____

Email: _____

Contribution Amount: \$ _____

This site is operated and maintained by the Division of Construction Engineering & Management, Purdue University as a not for profit service to the Construction Industry. Your contribution will enable Purdue ECT to sustain and continue enhancing this valuable resource.

Signature: _____

Date: _____

Comments:

Please mail the Invoice & Check to: The Division of Construction Engineering & Management, Purdue University, 550 Stadium Mall Drive, West Lafayette, IN 47907 – 2051. All enquiries can be addressed by Phone: + 1 765 494 2240, or by email at ectinfo@ecn.purdue.edu