

Quarterly Report: Oct-Dec 2007

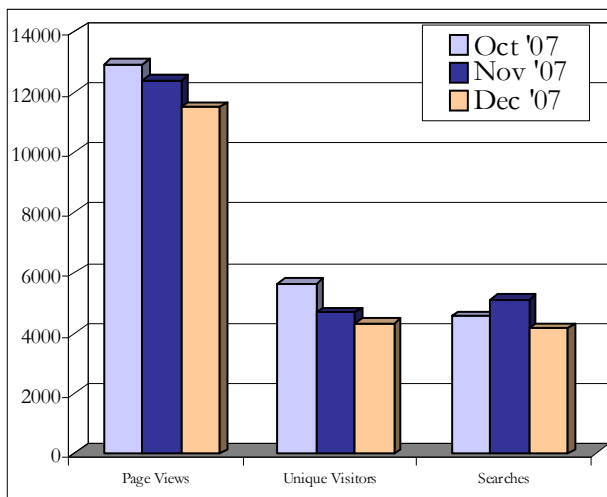
CONTENTS	
1.	Introduction
2.	ECT Visitors
3.	ECT Members
4.	Updates
5.	Fact Sheets
6.	Fact Sheet Index
7.	Fact Sheet Visitors Statistics

I. INTRODUCTION

The Purdue University Emerging Construction Technologies Website was re-launched on Oct. 26 and is back by popular demand after taking a hiatus since January 2007. Following is the first quarterly report.

II. ECT VISITORS

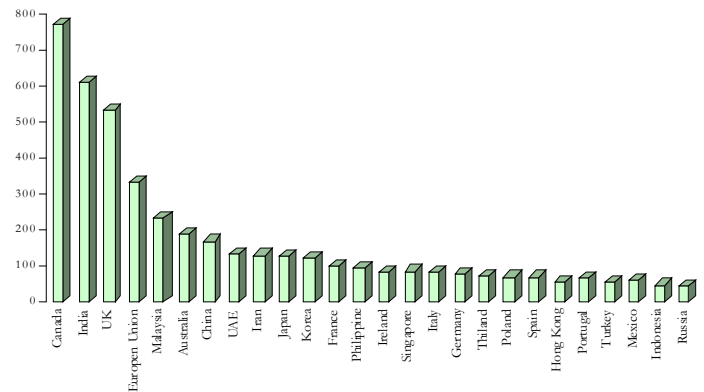
Purdue ECT website had 36,734 visits in the period from 1st Oct '07 to 31st Dec '07. An analysis of statistics of these visitors is discussed below:



Avg. Page views per visit:	2.29
Avg. Page views per hour:	17.23
Avg. Page views per day:	413.50
Avg. Visits per day:	180.56

Our visitors are from industry as well as from academia. A country-by-country analysis of our viewers, shows that although 7,390 visits out of 16,341 are from the U.S., we also have an international network, as suggested by the following graph.

Hits by Country



III. ECT MEMBERS

The website had 12 new subscriptions during the reporting period. Currently our website has a total of 1610 members, the breakup of which is given below:

Fact Sheet Holders:	340
Subscribers:	892
Purdue Alumni:	378

IV. UPDATES

Purdue-ECT received 4 new emerging technology requests in the reporting period. These technologies are under review and soon some of these shall be a part of our website.

V. FACT SHEETS

Purdue-ECT has fact sheets under following 7 major Areas: Civil, Mechanical, Electrical, Internet Based, Safety, Sensors and Other Technologies. Each of these major areas is divided in sub-areas. Currently the website displays 196 technology fact sheets, 70 of which come from educational institutions or research laboratories.

The table on the following page shows the distribution by categories of fact sheets. Please refer to your fact sheet ID stated in the letter to identify the category of your product fact sheet, knowing which you can look in the relevant category of statistics attached further to view the hits your fact sheet got.

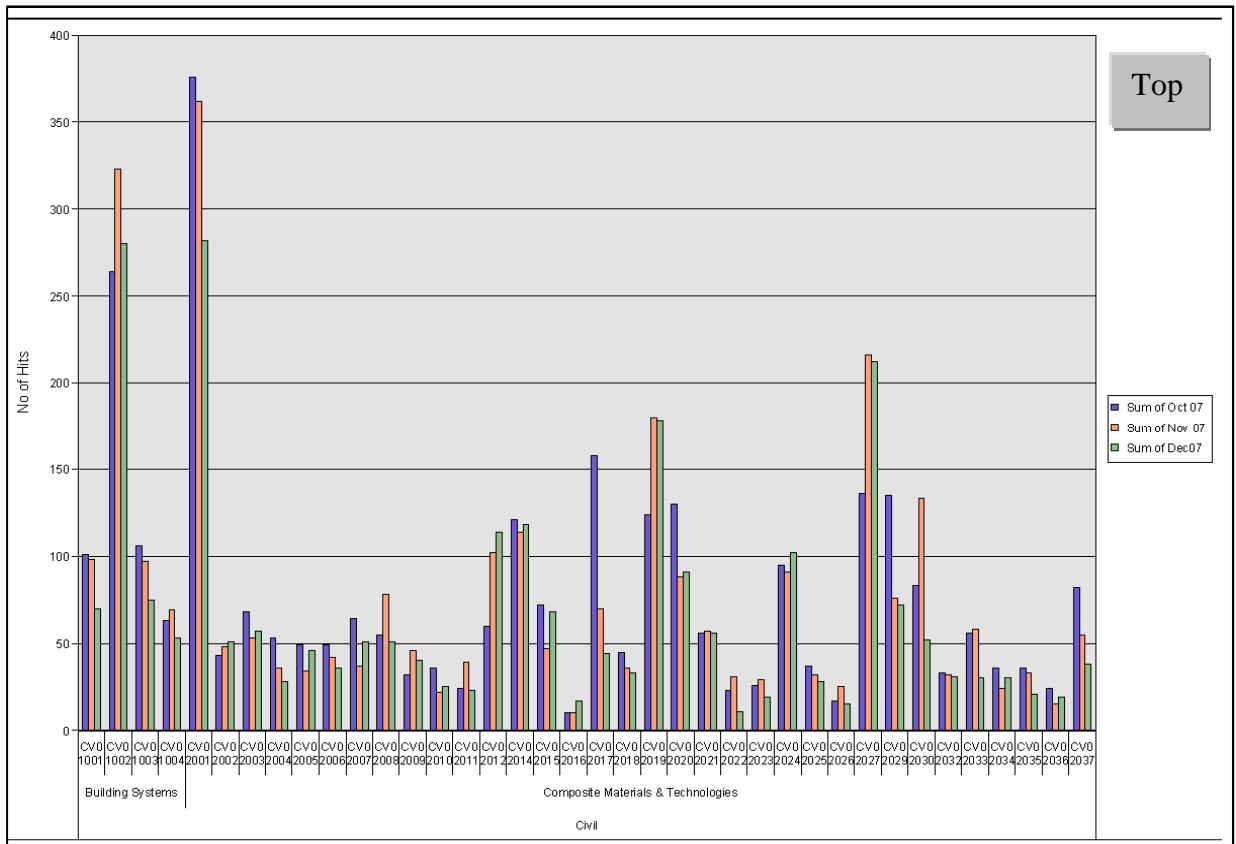
Copyright © 2007, Purdue ECT

VI. FACT SHEET INDEX

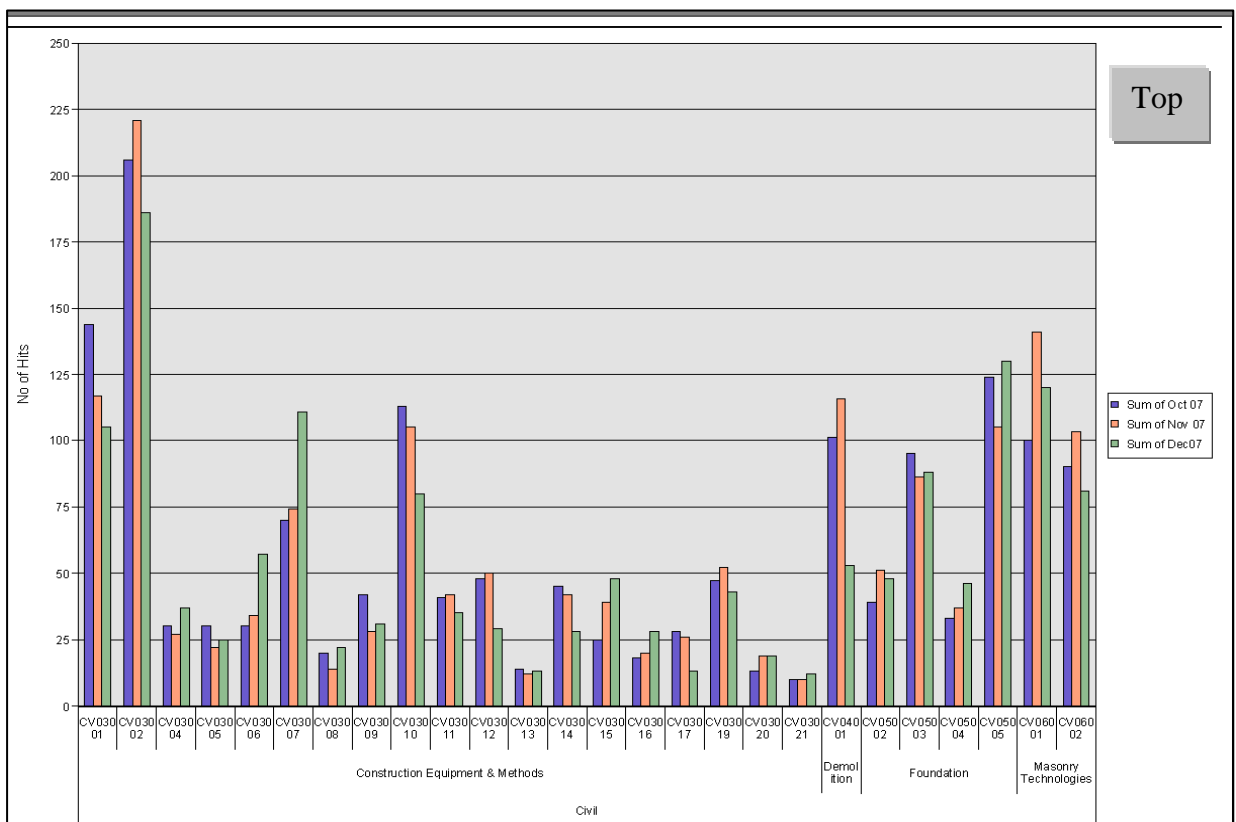
	Sub-Area	No of Fact Sheets	Fact Sheet ID Prefix
Civil	Building Systems	4	CV01
	Composite Materials & Technologies	37	CV02
	Construction Equipment and Methods	21	CV03
	Demolition	1	CV04
	Foundation	5	CV05
	Masonry Technologies	2	CV06
	Roofing Technologies	2	CV07
	Steel Technologies	5	CV08
	Structural Connection Technologies	6	CV09
	Trenchless Technologies	7	CV10
Mechanical	Conveying Systems	2	MC04
	Industrial Equipment	1	MC07
	Internal Pipeline Assessment Technologies	1	MC08
	Pipe Technologies	4	MC09
	Welding Technologies	2	MC13
Internet Based	e-Marketplace	3	IN01
	Information Services	7	IN02
	Network Technology & Equipment	3	IN03
	Web-based Learning Systems	2	IN04
	Web-based Project Management	4	IN05
	Web-based Engineering Software	4	IN06
Electrical	Basic Electrical Materials & Methods	1	EL01
	Electrical Power	0	EL03
	Lighting	0	EL04
	Wiring Methods	0	EL08
Safety	Safety Software	1	SA01
	Safety Equipment & Method in Construction	3	SA02
Sensors	Non-Destructive Evaluation	6	SE01
	Construction Equipment & Methods	2	SE02
	Security	1	SE03
Other Technologies	Communication	3	OT01
	Engineering Software	12	OT02
	Equipment Automation	9	OT03
	Non-Destructive Evaluation	6	OT04
	Recycling	3	OT05
	Remediation	5	OT06
	Robotics	3	OT07
	Security	4	OT08
	Site Positioning & Metrology	2	OT09
	Soil Remediation	9	OT10
	Water/Waste Systems	1	OT11
Water Detection/Resistance	2	OT12	
TOTAL		196	

VII. FACT SHEET VISITORS STATISTICS

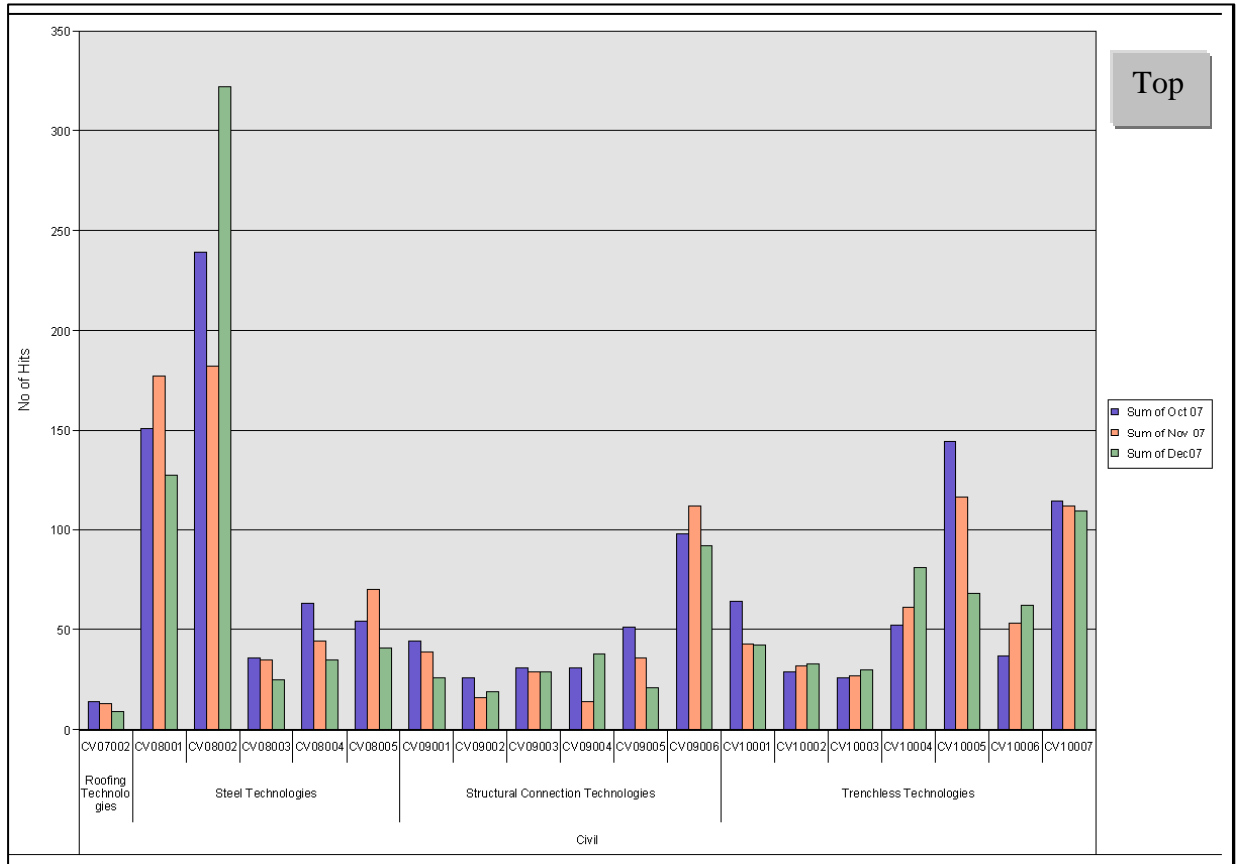
CIVIL: CV01 & CV02



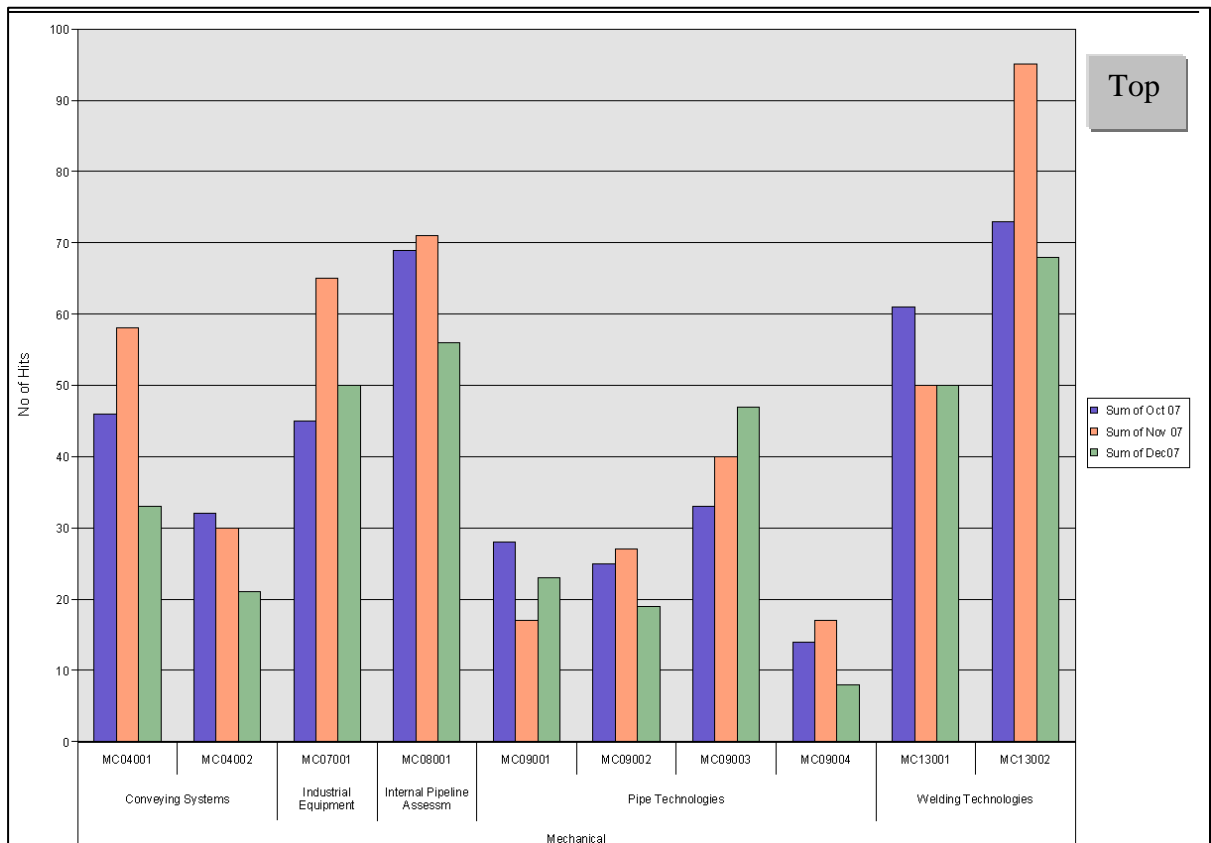
CIVIL: CV03 to CV06



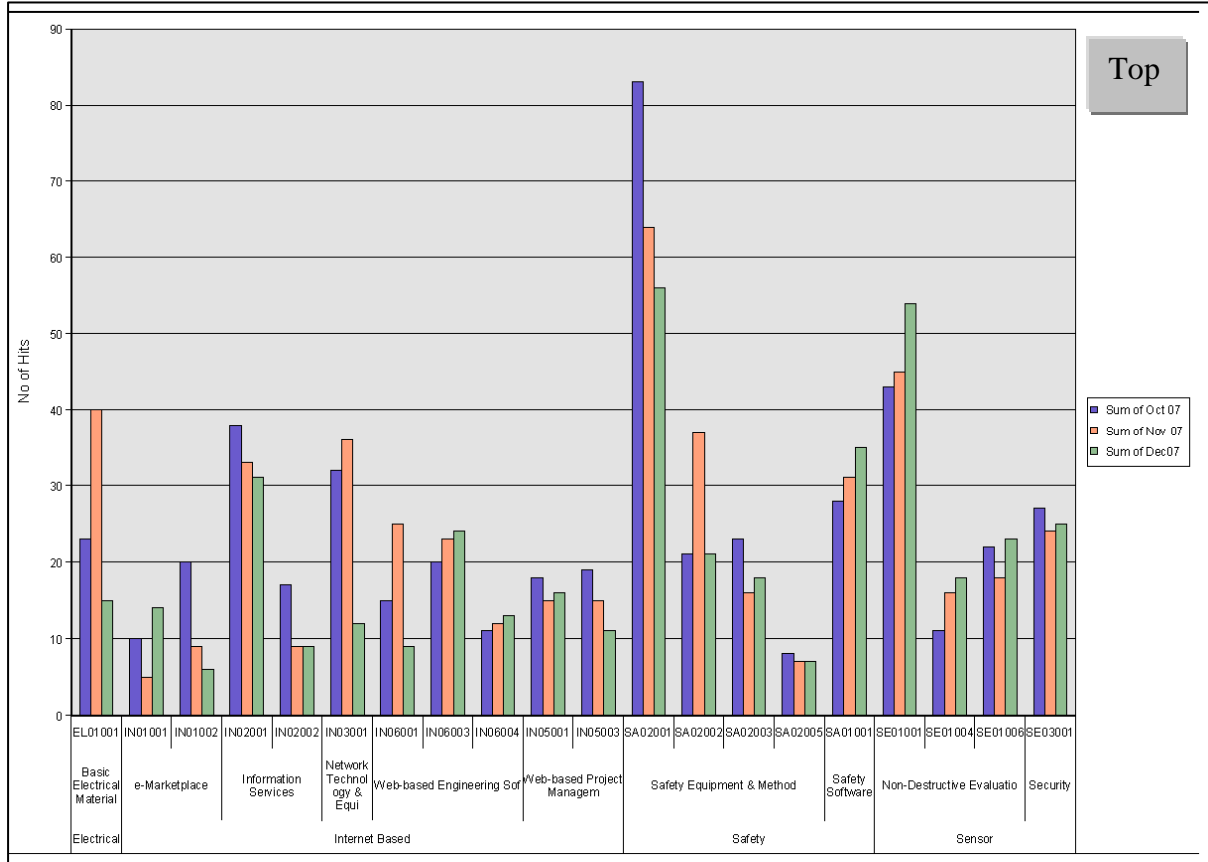
CIVIL: CV07 to CV10



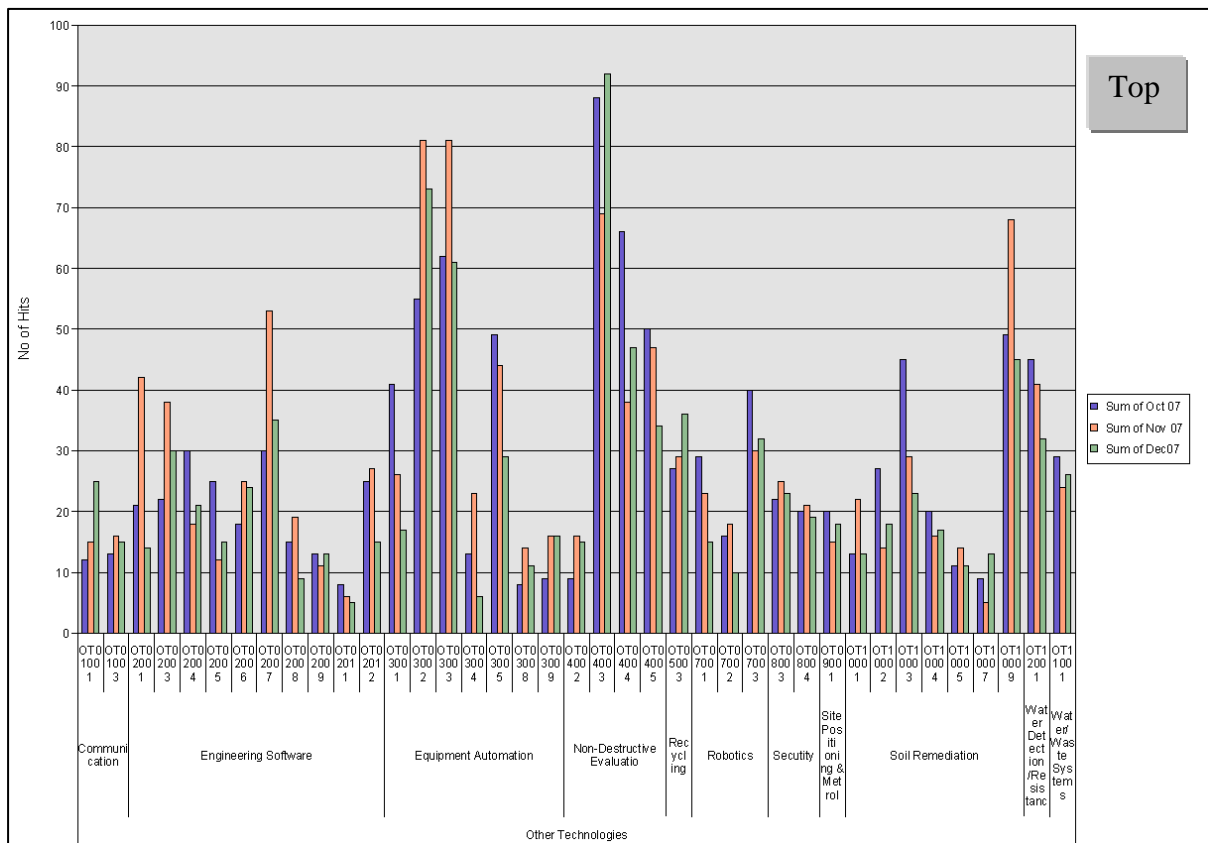
MECHANICAL: MC04 to MC13



ELECTRICAL (EL), INTERNET BASED (IN), SAFETY (SA) AND SENSOR (SE) TECHNOLOGIES



OTHER TECHNOLOGIES: OT01-OT11



Purdue – Emerging Construction Technologies Website

INVOICE

Name: _____

Company: _____

Address: _____

Phone & Fax: _____

Email: _____

Member ID: _____

Fact Sheet ID: _____

NOTE: please refer to the cover letter for Member ID and Factsheet ID.

Technical Contact:

Name: _____

Phone: _____

Email: _____

Please check the appropriate amount: \$300 Other \$_____

This site is operated and maintained by the Division of Construction Engineering & Management, Purdue University as a not for profit service to the Construction Industry. Your contribution will enable Purdue ECT to sustain and continue enhancing this valuable resource.

Signature: _____

Date: _____

Comments:

Please mail the Invoice & Check to: The Division of Construction Engineering & Management, Purdue University, 550 Stadium Mall Drive, West Lafayette, IN 47907 – 2051. All enquiries can be addressed by Phone: + 1 765 494 2240, or by email at ectinfo@ecn.purdue.edu